



University of
Management
and Economics

One step ahead

ISM Factsheet
2024 - 2025



ISM University of Management and Economics

ISM University of Management and Economics is one of the top-ranked business universities in the Baltics, founded by BI Norwegian Business School. Our name has always been closely associated with quality, international experience, prestige, leadership and constant progress.

No. 1 in Lithuania in:

- Management
- Economics
- Business
- Finance

NEW CAMPUS!

We are glad to inform you that in February 2023, ISM has relocated to the very centre of the capital – to Vilnius' former Central Post Office, located in Gediminas Avenue 7.

Modern and efficient premises were adapted to our students, academics and administration. The new location, next to the Bank of Lithuania, the Lithuanian Science Council, the Lithuanian Government, other business and cultural centres, make it easier to feel the pulse of science, business and society.

The 5,400 square meter space contains auditoriums, offices, a modern library, dedicated places for student learning and collaboration, and spaces for events and recreational activities. The former building of Vilnius' Central Post Office was renovated while preserving its historical heritage and using innovative technologies.



ABOUT US

- The highest ranked business school in Lithuania (4 Palmes, Eduniversal Business Schools Ranking)
- All levels of studies: bachelor's, master's, MBA, doctoral and executive education, short courses
- Over 100 exchange and Double degree partners in all continents of the world
- International students from over 30 different countries
- On a track to prestigious AACSB (Association to Advance Collegiate Schools of Business) accreditation
- Member of EFMD (European Foundation for Management Development), globally recognised accreditation body for business schools, business school programmes, and corporate universities
- 42 % international faculty

ABOUT OUR STUDENTS

- 98% graduates would recommend studies at ISM to friends or family
- 98% graduates are employed in their study field
- 1/3 of ISM graduates have their own business
- 60% start working while they are studying

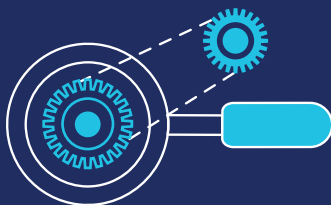


STUDENT NOMINATION

Students are nominated via email.

Once nominated to ISM, student will receive a link to ISM Online platform where he/ she will be required to fill in personal information as well as upload the following documents:

- Transcript of Records
- 1 photo
- Passport / ID card copy
- Insurance copy



NOMINATION DEADLINES

Spring
semester
1
November

Fall
semester
1
May

ALL AFOREMENTIONED DOCUMENTS MUST BE UPLOADED AT THE SAME TIME

Having filled online application and uploaded the required documents, students need to choose courses and upload Learning Agreement to ISM online platform.

The course lists of the previous semesters can be found [here](#).

The deadline for submitting all documents and choosing courses is December 1 (for Spring semester) and June 1 (for Fall semester).

EXCHANGE AT ISM: APPLICATION PROCESS



NOMINATED STUDENTS
RECEIVE AN
AUTOMATIC E-MAIL
WITH A LINK TO THE
ONLINE SYSTEM

AFTER NOVEMBER 1/ MAY 1



STUDENTS REGISTER
THEMSELVES TO THE ONLINE
SYSTEM AND UPLOAD THE
NECESSARY DOCUMENTS

UNTIL NOVEMBER 15/ MAY 15



STUDENTS CHOOSE
COURSES AND UPLOAD
LEARNING AGREEMENTS TO
THE ONLINE SYSTEM

UNTIL DECEMBER 1/ JUNE 1



STUDENTS RECEIVE
ADMISSION LETTERS

IN DECEMBER / JUNE



STUDENTS RECEIVE INFO
ABOUT EXCHANGE AT ISM
AND ORIENTATION WEEK

IN JANUARY/ JULY



STUDENTS CAN CHANGE
COURSES IN THEIR LEARNING
AGREEMENT*

Last week of August - first week of September
Last week of January - first week of February

*Courses can be changed only if there are overlaps or other important reasons



STUDENTS PARTICIPATE
IN THE WELCOME WEEK
(MANDATORY)

BEGINNING OF FEBRUARY
THE END OF AUGUST

ACADEMIC CALENDAR 2024/2025

FALL SEMESTER

(for undergraduate students)

2024 09 01 – 2024 01 24

Welcome Week

2024 08 26 – 2024 09 01

Lectures

2024 09 02 – 2024 12 13

Midterms

2024 10 21 – 2024 10 31

EXAMINATION

2024 12 16 – 2024 12 23

Christmas holidays

2024 12 24 – 2025 01 01

EXAMINATION

2025 01 02 – 2025 01 10

Retakes

2025 01 13 – 2025 01 24

FALL SEMESTER

(for graduate students)

2024 09 02 – 2025 01 31*



SPRING SEMESTER

(for undergraduate students)

2025 02 03 – 2025 06 20

Welcome Week

2025 01 27 – 2025 02 02

Lectures

2025 03 31 – 2025 05 16

Midterms

2025 03 17 – 2025 03 28

EXAMINATIONS

2025 05 19 – 2025 06 06

Retakes

2025 06 09 – 2025 06 20

SPRING SEMESTER

(for graduate students)

2025 02 03 – 2025 06 27*



* For graduate students, courses take place in modules of 1 – 3 intensive weeks; examinations are held at the end of each course.

REGISTRATION TO COURSES

Students register to the courses themselves on MY.ISM online system. All courses have quotas for international students; therefore, the seats in each course are allocated on the first come first serve basis. The quicker students fill in online application form and choose courses the better are the chances to get the seat in the preferred course.

There are three separate course lists for Bachelor, Master and Doctoral level courses.

Master (graduate) exchange students can select both Master and Bachelor (undergraduate) courses, if their home university allows it.

STUDY LANGUAGE - English

IMPORTANT INFORMATION

- COURSE LOAD - 6 or 3 ECTS per course
- 30 ECTS - maximum course load per semeste
- GRADING - 10-point scale, cumulative grading
- Courselists for the next semester are published in April/ October
- Timetables are announced on MY.ISM around 2 weeks before the beginning of the semester
- Exchange students are entitled to the retake exams, held at the end of the semester

Courselist
for 2024-2025



ASSESSMENT

Classes are assessed continuously (participation, small projects, group and individual work, presentations, etc.).

Cumulative Grading – In most cases, the final grade for course is formed from the midterm and final exam grades, as well as the assignment grades together. Each of these grades have different percentile values that depend on the course. For more information, please check the syllabus of each course.

GRADING AT ISM

Required knowledge %	Calculated evaluation (example)	Grade	ECTS equivalent
$95 \leq x \leq 100$	9,6	10	A
$85 \leq x < 95$	9,4	9	A
$75 \leq x \leq 85$	7,9	8	B
$65 \leq x, 75$	7,1	7	C
$55 \leq x < 65$	5,7	6	D
$50 \leq x < 55$	5,4	5	E
$40 \leq x < 50$	4,9	4	FX
$30 \leq x < 40$	3,8	3	F
$20 \leq x, 30$	2,5	2	F
$0 \leq x < 20$	1,3	1	F

EXAMINATION PERIOD

Exam period is organized at the end of each semester or at the end of each module.

Final exam period schedules are announced a month before the start of the exams.

The final exam session during Fall semester for Bachelor exchange students is arranged in mid-December, so the exchange semester is finished before Christmas Holidays. In case of failed exams, students must be present in January as well, since exam retakes are organized in the second half of the month.

For spring semester there is no earlier exam session, exchange students take their exams along with regular students. Retake exams are organized in the second half of June.

In addition to the final examination, there is a two-week midterm session that takes place at the end of October during Fall semester and at the end of March during Spring semester. There are no retake periods for the mid-term exams.

Exchange students are evaluated the same way as regular ISM students and no exceptions regarding grading, exam dates or organization mode are applied.

IMPORTANT INFORMATION FOR MASTER STUDENTS

Please note that Master courses have a special schedule: classes usually take place from 5 PM - 9 PM, in modules of 1 – 3 intensive weeks per course and the exams are held right after each course. Therefore, there is no regular exam session for Master courses.

Master students have classes in the evenings and/or on Saturdays

If Master students also select Bachelor level (undergraduate) courses, they will need to attend classes throughout the whole semester and follow both Master and Bachelor course and examination schedules.



ISM STUDY PROGRAMMES

UNDERGRADUATE STUDIES



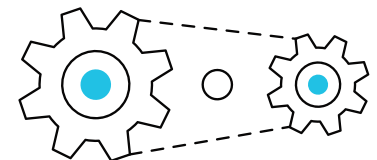
- **INTERNATIONAL BUSINESS AND COMMUNICATION**
(3.5 - year programme, fully taught in English)
- **FINANCE**
(3.5 - year programme, fully taught in English)
- **ECONOMICS AND POLITICS**
(3.5 - year programme, fully taught in English)
- **BUSINESS MANAGEMENT AND MARKETING**
(3.5 - year programme, fully taught in English and Lithuanian)
- **ECONOMICS AND DATA ANALYTICS**
(3.5 - year programme, fully taught in English and Lithuanian)
- **ENTREPRENEURSHIP AND INNOVATION**
(3 - year programme, fully taught in English)

GRADUATE STUDIES



- **INTERNATIONAL MARKETING AND MANAGEMENT**
(2 - year programme, fully taught in English)
- **FINANCIAL ECONOMICS**
(2 - year programme, fully taught in English)
- **INNOVATION AND TECHNOLOGY MANAGEMENT**
(1.5 - year programme, fully taught in English)
- **GLOBAL LEADERSHIP AND STRATEGY**
(1.5 - year programme, fully taught in English)
- **BUSINESS SUSTAINABILITY MANAGEMENT**
(1.5 - year programme, fully taught in English)

BALTIC DOCTORAL PROGRAMME IN MANAGEMENT AND ADMINISTRATION



PhD Degree, 4-6 years. Partners: BI Norwegian Business School (Norway), Aarhus University (Denmark), Tartu University (Estonia).

Research areas: governance and leadership, human resource management, strategy and marketing, consumer behaviour, finance and risk management, change management and organizational development, business process management.

ISM SUMMER UNIVERSITY IN BALTICS

3-weeks long course held in July, with more than 100 students from all over the world enables undergraduate students to study during the best time of the year in one of the fastest changing regions of Europe.

- Each subject in the curriculum has a strong European focus.
- ECTS transferrable credits from the top ranked university in the Baltics.
- Courses: International Marketing, E-Commerce, Low-Code Solutions for Business Analytics, European Economy from the Industrial Revolution to Covid-19

BEFORE YOU ARRIVE

HEALTH INSURANCE

Students who are the citizens of EU/EEA member countries are advised to bring the European Health Insurance Card (EHIC) and/or a private health insurance.

Insurance must guarantee the coverage of costs and expenses of the emergency medical aid, which may occur due to the foreigner's return to the foreign state due to health issues (transportation, including the escort of a personal health care expert (experts), as defined in the Law on Health System of the Republic of Lithuania.

The insurance amount must be at least 30 000 Euros. The health insurance should be valid in Lithuania and in all Schengen area.

MIGRATION

For EU / EEA citizens

Students coming to the Republic of Lithuania for more than 3 months in a 6 - month period, have to register their residence and obtain a certificate signifying the right to temporarily reside in Lithuania. Students have to do so within 3 months of arrival in Lithuania.

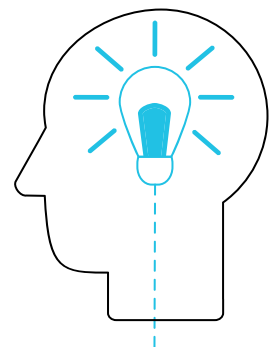
More information can be found [here](#).

For non EU / EEA citizens

Students shall apply for a national visa D prior to their arrival to the Republic of Lithuania. Students coming from countries where a visa-free regime applies, can enter the country without a visa and stay here for up to three months. Students staying in Lithuania longer than 3 months, shall apply for a national visa D in the Migration Department of the Republic of Lithuania. The decision on the issue of visa D shall be made within 15 days after the receipt of application.

More information can be found [here](#) and [here](#).

You can also consult: migration@ism.lt



HOUSING

ISM is located in the Old Town of Vilnius, minutes away from the city's most important sites, including Cathedral Square, Gediminas' Castle, the Bernardinai Garden, as well as many beautiful old churches, museums and restaurants.

Please be aware that ISM does not have its own dormitories, however, for the convenience of students ISM has signed contracts with some hotels/brokers. For up-to-date housing offers please visit [ISM website](#).

Students sign the accommodation contracts with properties directly.

VILNIUS – A GREAT PLACE TO LIVE, STUDY AND WORK!

#1 city offering the fastest public Wi-Fi in the world

#1 city in the world for attracting Tech Startups, according to Tech Start-up FDI Attraction Index 2019

- One of the capital cities in Europe breathing the cleanest air, according to European Green City Index
- One of the greenest cities in Europe - 46% is dedicated to green space
- Walkalbe - getting to most places in Vilnius is just a matter of walking for a few minutes

PRICE LEVELS:

- Monthly high speed internet ~ 10 euros
- Typical lunch ~ 7 euros
- Rent for a one-room flat in the city centre ~ 550 euros
- Monthly public transport ticket for students ~ 6 euros



STUDENT LIFE AT ISM

CREATIVE SHOCK

Creative Shock is an annual business case competition for students from all around the world. Participants every year are gathered to solve business, marketing and PR problems for social enterprises and organizations.

In 2021 the competition was attended by 1504 participants from 71 countries.

ERASMUS STUDENT NETWORK

ESN ISM is a part of Erasmus Student Network, which is the biggest student organization in Europe. ESN ISM helps exchange students to integrate in Lithuania, introduces them to the culture and history, and organizes various events and trips.



ESN ISM Vilnius



BUDDY PROGRAMME

All exchange students are offered buddies - local students who help to facilitate and integrate international students into ISM community and local life. To apply for a buddy, simply tick a box while completing your online application form for exchange studies at ISM.

STUDENT CLUBS AT ISM

Various students clubs are operating at ISM. There are clubs for fans of sports, marketing, books, politics and they are all looking forward to international students joining their activities. Do not hesitate - it is a great way of meeting locals and feeling as a part of ISM community! You can find more information [here](#).

INTERNATIONAL STUDIES OFFICE TEAM



Greta Kiškienė

Team Leader for International Studies
greta.kiskiene@ism.lt



Greta Tarnauskaitė

International Partnership Manager
greta.tarnauskaite@ism.lt



Indrė Kasputytė

International Studies Coordinator (Incoming)
indre.kasputyte@ism.lt



Kristina Laurinčiukaitė

International Studies Coordinator (Outgoing)
kristina.laurinciukaite@ism.lt

You may address all your inquiries directly to international@ism.lt

HOUSING INQUIRIES:

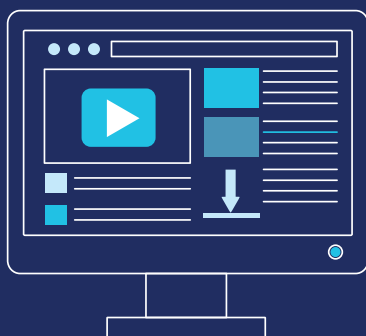
accommodation@ism.lt

MIGRATION:

migration@ism.lt

ERASMUS code: LT VILNIUS25

Address: ISM University of Management and Economics,
Gedimino pr. 7, LT-01103 Vilnius, Lithuania.



SOCIAL MEDIA



Supported by:

Erasmus+

Enriching lives, opening minds.